

Opening new doors





Homeward Bound's Mission:

preventing and ending homelessness in our community through permanent housing and support.

We believe:

Housing is a human right, integral to self-worth and dignity.

In the absolute value and worth of every single human being.

Homelessness is a solvable problem.

All services should be offered with respect and empathy, in the spirit of hope and recovery.



Homeward Bound's work is anchored in the Housing First Model, a national best practice offering permanent housing and supportive services without preconditions.

It's based on overwhelming evidence that people experiencing homelessness can achieve stability and thrive through flexibility, individualized support, client choice, and autonomy.

The result: higher housing retention rates, reduced reliance on costly crisis services and institutions, and improved health and social outcomes for our neighbors across Buncombe County.

Visit homewardboundwnc.org/client-stories to hear experiences of clients served by our different programs.



Words from our Leadership

Dear Donors and Supporters of Homeward Bound,

Homeward Bound, like many nonprofits, has seen significant growth in the need for homeless services and permanent supportive housing in such a short timeframe. At times, the common phrase “learning how to run before you walk” became the mindset for our organization, as we had to react quickly to the changing demands and environment.

I am incredibly grateful for our Interim Executive Directors –Cindy McMahon, David Bailey, David Nash and Kelly Pierce who led our organization during several years of transition and gave us the opportunity to find our new CEO: Simon Dwight.



It's hard to believe that Compass Point Village will celebrate its second anniversary in September. Between the opening in September 2023 and the end of 2024, we placed 100 clients into this permanent supportive housing facility, the first of its kind in Buncombe County. Evidence has shown that it takes chronically homeless individuals a year to settle into a new lifestyle once housed. During our first year of opening Compass Point Village, our team focused on ensuring our residents had stability and acclimated to a new chapter of their lives.

As we approached Fall 2024, our staff increased their focus on building community among our residents. This new theme was apparent during the initial days following Hurricane Helene, as residents quickly learned how to pitch in and support where they could to ease the demands that were put on our staff and organization. When I think about the future of Homeward Bound, I actually find myself thinking of the past. When I joined the Board of Directors in March 2020, I could have never imagined the growth that our organization would experience in four short years. Even with all of the curve balls that were thrown our way, **I am proud to say that Homeward Bound never wavered from our mission of ending homelessness.**

What makes me even more optimistic about the future of our organization? Our people. Your unwavering commitment to support our clients even during the most uncertain times continues to amaze me. The stories and details you will read in this annual report would not be possible without the staff and partners of Homeward Bound who work to ensure we advocate on behalf of our clients. This year’s annual report is dedicated to each of you. Thank you.

Melissa Duong | Board President

2023/2024 Board of Directors

Melissa Duong, <i>2024 President</i>	Isaac Rowles, <i>2024 Treasurer</i>	Amber Banks	Neely Neu
Barbara Wright, <i>2023 President</i>	Jorge Redmond, <i>2024 Secretary</i>	David Hamilton	Anna S. Osborne
Jo Ikelheimer, <i>Vice President</i>	Kelly Pierce, <i>2023 Secretary</i>	Alan Steinberg	Claire Hubbard
Heather Norton, <i>2023 Treasurer</i>	Jaclyn Bandell	Wayne Swanton	Shuchin Shukla
	Mayumi Steins	Rodrigo Afanador	Chris Youngblood

Dear Friends,

When I stepped into the role of CEO in October of 2024—just three weeks after Hurricane Helene—I knew I was joining Homeward Bound at a pivotal moment. What I didn't know was how deeply I'd be moved by the spirit of this team, the strength of this community, and the stories of those we serve.

These first six months have been intense. But the thing that has struck me most isn't just the scale of the challenge. It's the depth of commitment from the people around me.

We've been through a lot. The organization has grown rapidly in recent years, and that kind of growth comes with pressure. There have been cracks. But cracks in a system don't just reveal weakness—they show you where to strengthen, and that's what we're doing.

I've spent my entire career working on homelessness—first as a volunteer in a night shelter, then running services, advising governments, and researching solutions. What I know for certain is that homelessness can be ended. Not easily. Not overnight. But it is possible. I wouldn't have moved my family across the ocean if I didn't believe that, and I wouldn't have joined Homeward Bound if I didn't believe this organization had what it takes.

What gives me that belief is what I've seen in action every day. I've seen our team show up in places no one else will with compassion and consistency. I've seen us take bold steps to solve problems that many said were impossible. Compass Point Village is one of the most tangible examples of that—a building that is more than just housing. It's a place where people who've faced chronic homelessness are rebuilding their lives with stability and support. It's a testament to what happens when we stop asking, "Is it possible?" and start asking, "How do we make it happen?"

And I've seen the tenacity of this team. No matter what's thrown our way—we keep moving forward. We adapt. We learn. We stay grounded in our mission and focused on those we serve.

As we come out of this period of transition, we are focused on becoming strong and stable. That means more than just holding things together—it means building something better. **We are strengthening our internal systems and structures, investing in leadership and staff development, improving how we communicate and collaborate, and committing to a culture that is calm, creative, and deeply collaborative.**

But perhaps most importantly, we are grounding ourselves in what matters most: showing up with reliability, dignity, and hope for the people experiencing homelessness in our community. We're laying a foundation that will last.

I'm proud of where we are and even more excited about where we're going. Thank you for standing with us, believing in our mission, and being part of this journey.

With gratitude,

A handwritten signature in black ink that reads "Simon". The script is fluid and cursive, with a large, looping 'S' at the beginning.

Dr. Simon Dwight | Chief Executive Officer



Homeless Services

Outreach

Outreach Services sends our trained teams out into the community, providing caring, one-on-one support to our unsheltered neighbors who aren't able to visit AHOPE. Our teams offer ongoing support and strive to connect these individuals with essential medical and mental health services, substance-use disorder services, emergency shelters, and resources to facilitate their transition into long-term housing.

People experiencing homelessness face significantly higher risks for both physical and mental health problems. Two brothers were living out of their car, which had broken down and was stuck at a mechanic shop. A concerned community member contacted our Outreach team, who then connected with the brothers to provide life-saving assistance.

"Neither had any funds, and all of their belongings were in the car, which they couldn't access. I took them to AHOPE to shower, and I went to Walmart to buy them a fresh change of clothes and additional toiletries. After they cleaned up, I noticed one of the brothers appeared unwell. I was able to take them to the ER because he had a serious infection that had turned septic." - Mike DeSerio, Outreach Program Manager

This moment is a clear example of why access to basic care and consistent outreach is so essential. Without intervention, what started as a broken-down car could have turned into a life-threatening health crisis.

OUR
OUTREACH
TEAM MET:
249
UNSHELTERED
PEOPLE
in 2023 and 2024



AHOPE Day Center

The AHOPE Day Center acts as the front door to our services. It links people experiencing homelessness with our housing services and provides fundamental daily necessities, including showers, lockers, mail receipt, coffee, food, clothing, case management, and community. Most importantly, it's where our unhoused neighbors go to work with staff to develop a housing plan.

"We serve the people who aren't seen. A lot of clients are dealing with fight or flight. Some say, 'We don't want the rest of the world to see our problems. So, how do we change this story? We work with folks in crisis, and we know that crisis increases crime and substance use. When clients come into AHOPE, they get to set their crisis aside for a few hours. They get to have peace.'" – Alanna Kinsella, Homeless Services Director

2024 marked a 9% increase in the annual number of AHOPE visitors due to the increasing cost of living, lack of affordable housing, and the effects of Hurricane Helene. In response, AHOPE has made several changes over the past two years: adding sleeping cots to the main floor, introducing café-style coffee service for more human connection, and bringing on a second Crisis Intervention Specialist. All three changes, including the incredible efforts of our volunteers, whom Alanna calls the glue of AHOPE, have made a huge impact on our unhoused neighbors' day-to-day lives.

AHOPE WELCOMED:

1,420

UNHOUSED NEIGHBORS

in 2023

1,548

UNHOUSED NEIGHBORS

in 2024



Housing Services

WE ENDED HOMELESSNESS FOR:

147 PEOPLE,
INCLUDING

56 VETERANS
in 2023*

43 PEOPLE,
INCLUDING

21 VETERANS
in 2024

*2023 marked the opening of Compass Point Village, which provided homes to 85 formerly homeless individuals.

Supportive Services for Veteran Families

Supportive Services for Veteran Families (SSVF) helps veterans secure and maintain stable housing through emergency housing support, rental assistance, and case management. Rapid Rehousing (RRH) provides 6 to 9 months of rental assistance, Shallow Subsidies (SS) offers two years of partial rent coverage, and Homelessness Prevention (HP) helps veterans stay in their homes by covering rental and utility arrears to avoid eviction. Outreach teams connect veterans experiencing homelessness with the right resources, ensuring they receive the support they need to regain stability.

A Veterans Affairs social worker referred the Howard family to Homeward Bound's SSVF program after they fell four months behind on rent due to job instability and high housing costs. Their landlord told them they had until 4 p.m. to pay, otherwise they'd be evicted by the sheriff's department the next morning.

"Hope seemed slim, the team started thinking about backup ideas like a shelter. Just the act of losing your housing is traumatic. Especially when you're a parent with kids." - Catherine Lukacs-Ormond, SSVF Program Manager.

Catherine swiftly enrolled them, while the Homeless Prevention and Finance teams worked quickly to deliver payment to the landlord just minutes before the deadline. Their efforts prevented eviction, allowing the family of seven to stay in their home with ongoing support to regain stability.

Alex, another client in the SSVF program, said, *"anyone experiencing homelessness shares a set of emotional distresses ... I had so much negative energy in me, I didn't react well to the amount of stress my family was dealing with. My oldest son and I's relationship was strained. My wife and I even talked about going our separate ways. Homeward Bound saved my relationship with my son and definitely played a part in saving my marriage."*

Rapid Rehousing

Rapid Rehousing offers short-term rental assistance and supportive case management to individuals facing homelessness or at risk of losing their housing. Unlike Permanent Supportive Housing, which provides long-term assistance, **the goal of Rapid Rehousing (RRH) is to help community members secure housing quickly, stabilize, and increase their ability to maintain housing independently.**

Homeward Bound's work would not be possible without the consistency, passion, and dedication of our staff.

"I believe that we are making a difference in the community and that we are on the road to end homelessness. That's what keeps me here. Housing is a basic human right, a healthcare necessity, and no person should be left without it. I have faith and hold hope that whatever barriers we encounter, we will persevere and continue to meet people where they are, treat them with the utmost respect, and assist them into housing. That is what we do." - Amanda Thomas, Rapid Rehousing Program Manager. Amanda is Homeward Bound's longest serving team member, celebrating her 20th anniversary in 2024.

WE PREVENTED HOMELESSNESS FOR:

74 PEOPLE
in 2023 including
66 veterans

83 VETERANS
in 2024



Permanent Supportive Housing

Our Permanent Supportive Housing (PSH) program provides safe, stable homes paired with supportive services to highly vulnerable, chronically homeless individuals. These individuals typically need a higher level of care due to their complex, long-term health conditions, including mental illness, substance use disorders, and physical disabilities. As a result, they often need extra support to remain in housing. Case managers connect clients with resources in the community, as well as support clients as they navigate the transition from living outside to living inside their own homes.

When asked what keeps him going, despite everything he's been through, PSH client Matthew says, *"It's because the people at Homeward Bound care about me. They made me realize people care about me. If I give up on myself, then I'll have let people down that I like a lot. Homelessness is a rabbit hole and Homeward Bound is there for a reason. If you get one person out of ten people out of homelessness, you're a good organization. If you can keep that person out of homelessness, like me, then that's a good break."*

Homeward Bound's PSH program includes the Scattered Site team, who work with clients housed with private landlords across Buncombe County, and long-term residences at Homeward Bound's Key Commons and Compass Point Village.

SINCE ADOPTING
THE HOUSING FIRST
MODEL IN 2006,
HOMEWARD BOUND
HAS MOVED

2,648

**unique individuals
into housing.**



Healthy Opportunities Pilot (HOP)

In August 2024, Homeward Bound joined the North Carolina Healthy Opportunities Pilot (HOP), a groundbreaking Medicaid program launched to demonstrate the effectiveness of addressing critical social needs, such as housing, food, transportation, and personal safety that can contribute to serious and costly medical conditions. For Homeward Bound, HOP offers a valuable opportunity to expand the number of people we can serve.

"Some of the folks we serve have never been homeless. Some have been chronically homeless. We're serving both. Someone's husband might have died and they've lost income and become homeless. They're single moms who just got divorced and are now on the streets. They don't have family who can take them in. HOP becomes part of their support system and can help connect them to all the resources we have readily available. Having someone they can call about their situation has been huge for them. A lot of people have to come up with \$3,000 to \$4,000 just to get into a home, and that's one of the biggest obstacles that HOP can help with." - Angel Thompson, HOP Specialist"

66

HOUSEHOLDS ASSISTED, INCLUDING

11

MOVE-INS THROUGH THE NC
HEALTHY OPPORTUNITIES PILOT.



Landlord Partnerships

Our partnerships with private landlords across Buncombe County are critical to fulfilling Homeward Bound's mission. Our Housing team works directly with landlords to keep units filled and provide support with tenant and property management. The relationships we build with our landlord partners are equally as important as those we build with our clients.

"For me, mostly it's just getting to help people that are in need whenever they need a place to stay, and I'm in a place where I can provide that for them. The experience working with Homeward Bound has been phenomenal.

I truly believe that it's their mission to end homelessness, and they go the extra mile for their landlords as well as the tenant. Their tenants all have big hearts. It's been nothing but a pleasure for me to work with them."

- Snyder Rentals, landlord partner

WE PARTNERED WITH:
127 LANDLORDS IN
2023 and 2024

Welcome Home Donation Center

The Welcome Home Donation Center ensures that each client moving into housing with Homeward Bound receives full furnishings and household items donated by our community to help make it a home. This team was an integral part of our hurricane relief efforts, coordinating and receiving hundreds of donations from community members far and wide. These donations provided much-needed support to both our housed and unhoused neighbors through community giveaways and supply pop-ups.



OUR WELCOME HOME TEAM TRANSFORMED:

120 HOUSING UNITS INTO HOMES
in 2023 with

\$112,966 WORTH OF DONATED
FURNISHINGS AND
HOUSEHOLD ITEMS.

88 HOUSING UNITS INTO
HOMES in 2024 with

\$107,617 WORTH OF DONATED
FURNISHINGS AND
HOUSEHOLD ITEMS.



In the Summer of 2023, Homeward Bound hit the road in a new way—thanks to you! With the support of our community and a successful GoFundMe campaign, we purchased a new box truck for the Welcome Home Donation Center. Our Welcome Home team travels nearly 900 miles each month, picking-up and delivering essential furniture and household items that help individuals and families move out of homelessness and into safe, stable homes.



Compass Point Village: Home is Key

In Summer of 2021, Homeward Bound purchased the Days Inn motel property located on Tunnel Road thanks to funding provided by Dogwood Health Trust, the City of Asheville, Buncombe County, and an anonymous donor. Over the next two years, **individual donors, faith groups, businesses, and foundations contributed over \$16 million** toward renovating the motel into the first Permanent Supportive Housing facility in Buncombe County.

The project finally came to fruition when the first resident moved into Compass Point Village (CPV) on September 21, 2023.

"All the firsts have stood out: the first lease signing, first Thanksgiving dinner, first Christmas carol singalong, first cookout, and first monthly birthday celebration. Those first few weeks watching residents bursting with pride to show me how they decorated their apartments were real tear-filled moments for me. I really can't imagine any work accomplishment in my life I could be more proud of than being a part of this project."

– Jenny Moffatt, Housing Services Director





Compass Point Village provides 85 homes to our most vulnerable community members, significantly reducing the number of people experiencing chronic unsheltered homelessness in Buncombe County. We provide 24/7 safety and security alongside case management, as well as weekly medical and behavioral healthcare services from partners across the community.

Residents also have access to a community dining area, courtyard, library with computers, peer support room, basketball court, and laundry rooms. Volunteers, staff, and residents have hosted craft nights, holiday parties, writing groups, and yoga classes –all to foster a supportive and close-knit community.

"Housing these folks and integrating accessible services consistently improves outcomes. We are building a community, building trust, and we are a constant presence. I love it because this model—combining these resources, is really rare. Taking a chance on a high-acuity population that is typically difficult to reach takes adjustment, but over the past year, we've seen not only community support coming in but also strong relationships forming among the residents at Compass Point Village. They're connecting in a way that's meaningful and helpful to their overall well-being."

— Judi Schultze, Appalachian Mountain Health

"I moved here, and I've just blossomed! Compass Point Village has helped me from the darkness to the light. I can hold my head high and know that better days are actually coming." - Kathaleen, Compass Point Village Resident

Open Your Heart to Women and Homelessness Luncheon

Housing breaks the cycle of homelessness and gives women the foundation to rebuild their lives. But true empowerment goes beyond providing services—it means honoring each woman's inherent worth, uplifting her voice, and believing in her limitless potential. For the past seven years, Homeward Bound has invited Buncombe County to engage in these conversations at the annual Open Your Heart to Women and Homelessness Luncheon.

At this event, we bring together experts in the social services field and share the stories of women who have found stability through housing. Community members are offered an open platform to understand the unique challenges women face while experiencing homelessness.

In 2023, we shared the story of Jan, a woman who became homeless after the unexpected loss of her husband. "I was so scared," Jan recalled. "I didn't know what to do. I was like a little child who had just lost her mom and dad." Despite facing illness and abuse while living on the streets, Jan remained resilient. She reached out to a local shelter that connected her with Homeward Bound. We moved Jan into a safe and stable home, where she has had the space to heal and thrive.

**Thank you to our 2023
and 2024 event sponsors:**



HomeTrust Bank

ingles **BILTMORE®**

98.1 the RIVER
Different is Good

AvL
TECHNOLOGIES


QUILITY


PINK DOG CREATIVE


WOMEN for WOMEN
A GIVING CIRCLE



Welcome Home Luncheon

Homeward Bound's annual Welcome Home Luncheon is our premier event to inform and inspire our community to take part in our mission to prevent and end homelessness.

The 2023 Welcome Home Luncheon raised more than \$200,000 to support Homeward Bound's annual fund, including case management services and AHOPE operations. Keynote speaker Kathy Izard, an award winning author and influential change-maker, shared the success of Moore Place, a permanent supportive housing project in Charlotte. Moore Place was the inspiration for us to create Compass Point Village.

The 2024 Welcome Home Luncheon reinforced Homeward Bound's unwavering belief that housing is a human right and that homelessness is a solvable problem. Attendees had the chance to watch Compass Point, a short film about the transformative impact of Compass Point Village on Ed, Leann, and Maureen. Ed, Leann, and Maureen moved into their own homes after years of chronic homelessness. In the film, Ed shared how he grew up experiencing trauma in the foster care system as a child and never felt he had the

ability to develop meaningful connections as an adult until he came to Compass Point Village.

Ed was able to spend the end of his life with peace, friendship, and community at Compass Point Village.

"I've met people like Norma. Norma is one of my friends. It's really good to meet good, solid people. Even though they're going through rough times, or rough periods, or whatever they're going through –I believe the possibilities are endless here.

There's a lot of good homeless people out there. It's a scary world, and people don't realize how scary it is when you're all by yourself. And so, when they're finally given a chance, you might be surprised just how wonderful a person might turn out to be." - Ed



Thank you to our 2023 and 2024 event sponsors:

BILTMORE®

ingles



98.1 the RIVER
Different is Good

AvL
TECHNOLOGIES



Beverly-Hanks
REALTORS®

Homeward Bound During Hurricane Helene

Homeward Bound received an incredible amount of support from our local and out-of-state community in the aftermath of Hurricane Helene. We were able to distribute hundreds of donations of food, water, clothing, and other essentials to our unhoused and housed clients across Buncombe County.

The AHOPE Day Center reopened the following Monday after the storm to provide our unhoused

community a place to connect and access essential resources. Our Outreach team reached out to our unhoused neighbors who were displaced or unaccounted for during the storm to connect them with resources and concerned family members. Within hours of the storm, Case Managers in all of our programs rallied to connect and provide resources to residents living at Compass Point Village, Key Commons, and in homes across the county.

Hurricane Helene had a drastic impact on homelessness in Buncombe County. We lost two members of our AHOPE community, and 11 people in our Supportive Housing Programs were displaced during the storm. Our housing team worked tirelessly to rehouse them, finding homes for 10 with the eleventh moving out of WNC.





Billy, one of the 10 clients who was rehoused in December 2024, was in the direct line of impact. *"I stayed in the house till the bitter end. I saw my porch detach from my house and watched my favorite TV and race bike that was gifted to me float down the river from my hallway."* Billy had to climb a tree to escape flood waters and stayed there for over six hours before he landed in the water and was saved by a neighbor who saw him struggling to hold onto debris.

Thanks to your support and compassion, Billy is settled in and loves his new home. He enjoys his neighbors, appreciates the proximity to his cancer treatment center, and has begun replacing cherished items he lost during the storm, including his moped, baseball caps, and fishing rods. Billy's journey is a true testament that housing is healthcare, and that even after finding stability for so many years, everything can change in an instant due to circumstances outside our control.

Collective Action Helps End Homelessness

Volunteers are essential to Homeward Bound's mission of preventing and ending homelessness. At AHOPE, they assist with mail distribution, shower supplies, cleaning, and other essential tasks to support those living unhoused. At the Welcome Home Donation Center, volunteers organize furniture and household goods to help individuals transition into housing.

Faith groups, businesses, and civic organizations also contribute through service days and donation drives, providing essential items like camping gear, socks, and warm coats for those in need.



Thank you to all of our incredible volunteers and community partners who supported Homeward Bound. We could not do this work without you.

Irmelin Toftegaard
Kelly & Larry Pierce
Laney Hutchings
Debbra Docsa
Patsy McNatt
Sam & Melanie
Murphy

Mary & John Ziebart
Tammy Boomer
Jason Harrington
Sheila Dunn
Jim Anderson
David Bailey
Alan Stienburg

Jim Hartye
Ted Zoller
Gary Fryar
Julie Moran
Lynn Patton
Lori Resnick
Holly Milsap

Bob Weinberg
Gail Rhodes
Carol Culler
Jess & Wayne
Swanton
Murray Parker
Douglas Philip

Barbara Mars
Evan Richter
Travis Atwell
Scott O'Neal
Peggy McCurry
Kurt Muller
Amber Deal



To learn more about how to volunteer with Homeward Bound, please email volunteer@homewardboundwnc.org.

Several members of the Homeward Bound team are helping shape our community's response to homelessness through the Asheville-Buncombe Continuum of Care (CoC). Housing Services Director, Jenny Moffat, serves on the CoC Board, while Luc Gay, our Coordinated Entry Program Manager, lends their insight to the Coordinated Entry Committee. Case Manager Nicholas Poulos contributes to the Community Relations Committee, and HOP Program Manager Aidan Morse brings his expertise to the Performance Committee. Their involvement helps ensure that our clients' needs and voices are represented in decisions that impact housing and homeless services across the region.

In late 2024, four other case managers used their personal connections to organize and host Hip-Hop for Housing, a concert and fundraiser for Homeward Bound.



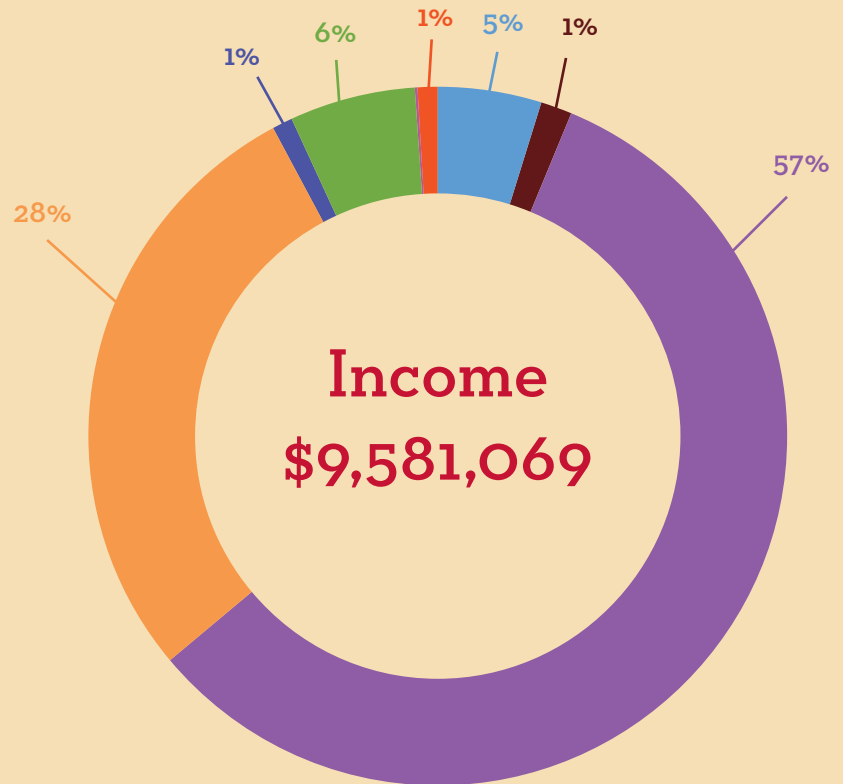
Hip-Hop for Housing
Catawba Brewing, November 2024

Financial Report

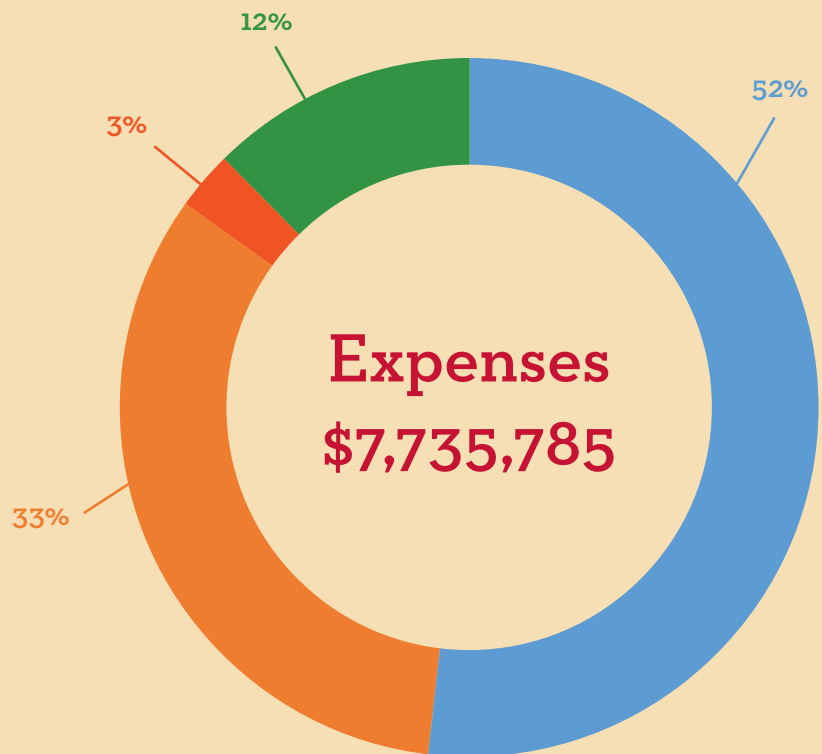
FY July 2022-June 2023

"Home is Key" campaign income and expenses are included in reporting.

- Private Foundations
- Corporate Foundations
- Public Grants
- Individual Contributions
- Faith Communities
- Business & Community Partners
- Other Income - Interest, Special Projects, and Other Adjustments



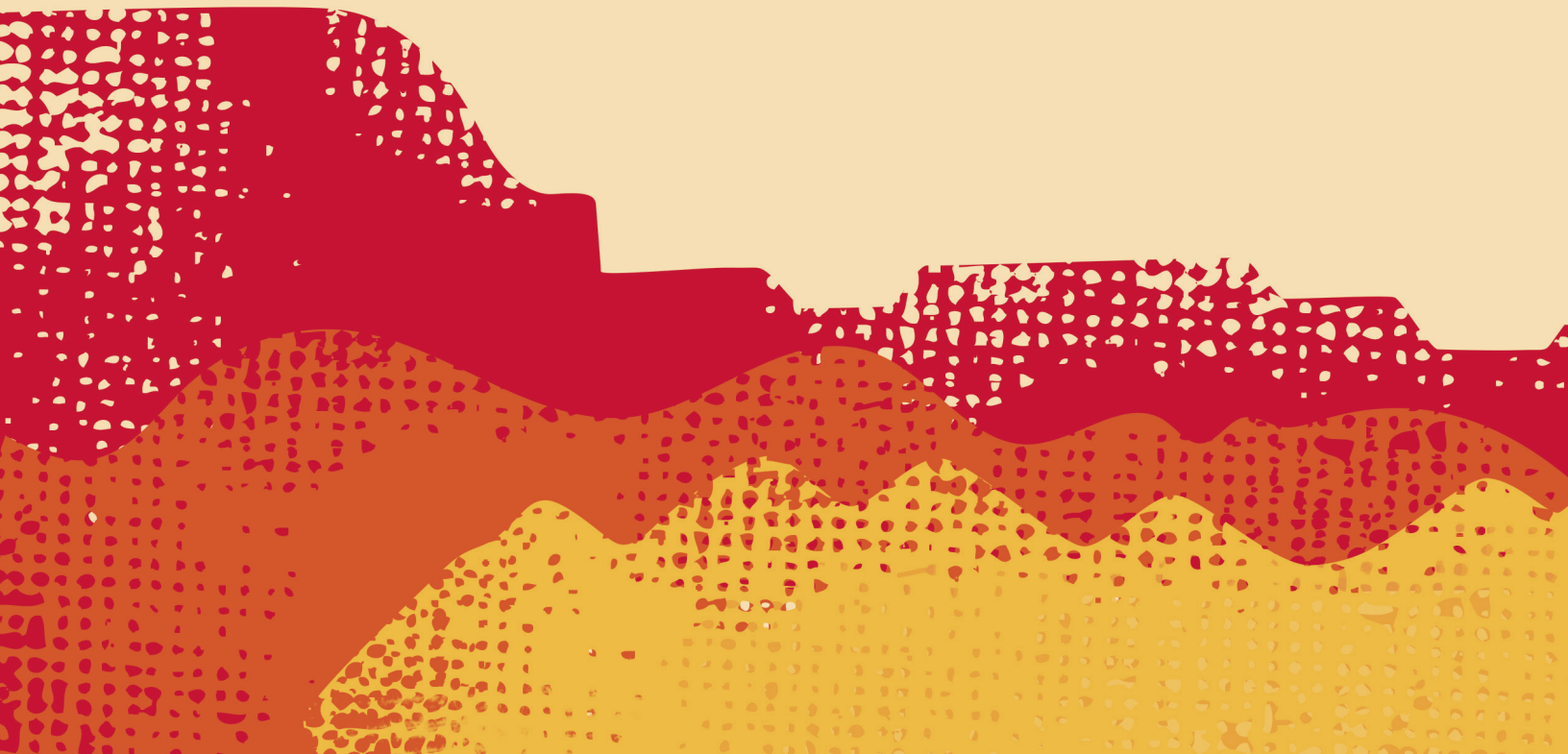
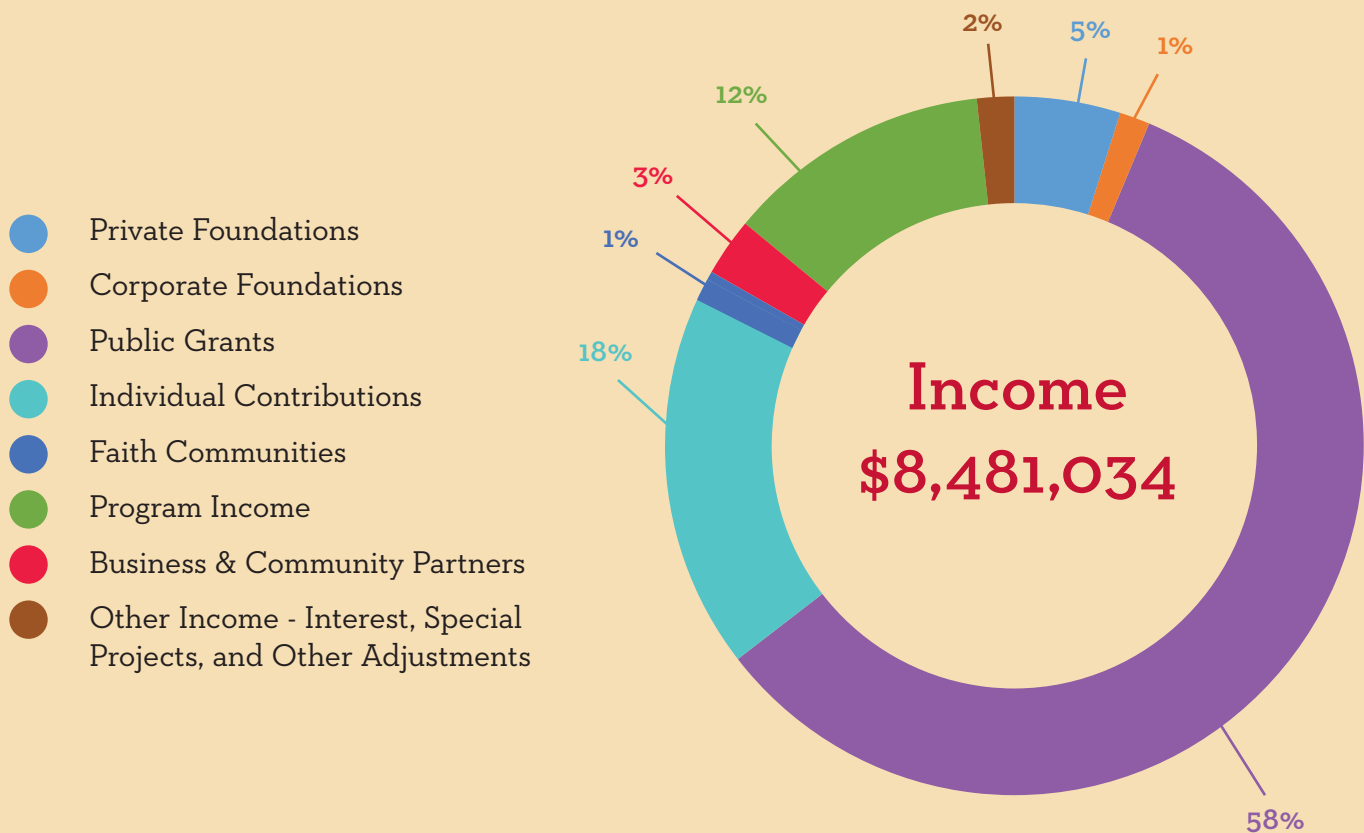
- Personnel Expense
- Client Supportive Housing
- Client Supportive Services
- Program Support Expenses



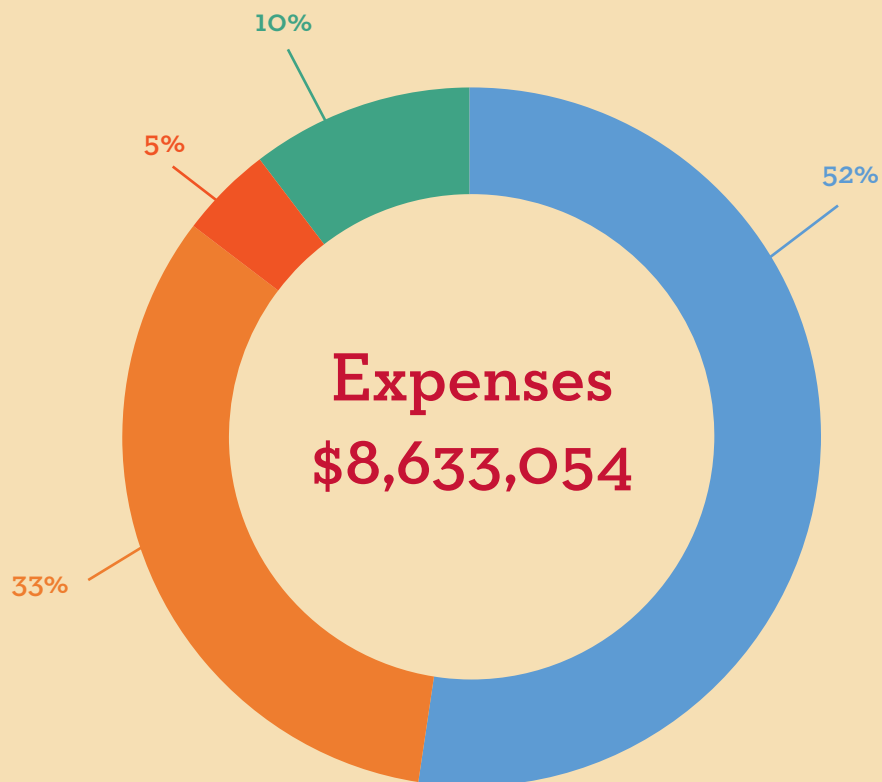
Financial Report

FY July 2023-June 2024

"Home is Key" campaign income and expenses are included in reporting.



- Personnel Expense
- Client Supportive Housing
- Client Supportive Services
- Program Support Expenses



2023 and 2024 Donors

THANK YOU for being the
KEY to ending homelessness



Individuals in bold are members
of our Key Society Giving Circle.

Individuals in italics gave to the Capital Campaign.

FEDERAL, STATE, & LOCAL GRANTS

City of Asheville

Asheville ABC Board

Buncombe County

North Carolina Department of Health
and Human Services

United States Department of Housing
and Urban Development

United States Department of Veteran Affairs

Vaya Health

*This annual report was funded in part by a grant from the United States Department of Veterans Affairs. The opinions, findings, and conclusions stated herein are those of the authors and do not necessarily reflect those of the United States Department of Veterans Affairs.

PRIVATE FOUNDATIONS AND COMMUNITY ORGANIZATIONS

The Arlington Foundation

Asheville ABC Board

Asheville Area Habitat for Humanity

Asheville Friends Meeting

The Boyd Foundation

Crane Charitable Funds

PRIVATE FOUNDATIONS AND COMMUNITY ORGANIZATIONS (CONT.)

Deerfield Retirement Community

Dogwood Health Trust

EA Morris Charitable Foundation

Gerald M and Carol A Miller Family Foundation

Huisking Foundation

Impact Health

Jack Tarver Foundation Irrevocable Trust

The Johnson Family Philanthropy Fund

JoVon Coli Endowment Fund

Land of the Sky Association of Realtors

The Leon Levine Foundation

Medyn Charitable Foundation

NC Coalition to End Homelessness

Pasquale and Rose Procacci Charitable Foundation

Philip L Van Every Foundation

Provident Benevolent Foundation

Sisters of Mercy of North Carolina Legacy

Southern Vision Alliance

The Thompson Family Foundation

United Way of Asheville and Buncombe County

CORPORATE FOUNDATIONS

Bank of America Charitable Foundation

Eaton Charitable Fund

First Bank

First Citizens Bank

First Horizon Foundation

Mariner Foundation

Norfolk Southern Foundation

North Carolina State Employees Credit Union

Pratt & Whitney

Publix Super Markets Charities

TD Charitable Foundation

Wells Fargo Foundation

Medyn Charitable Foundation



2023 and 2024 Key Sponsor: Biltmore Estate

Biltmore is honored to partner with Homeward Bound in support of their critical work to combat homelessness in our community.

"Homeward Bound's mission to provide permanent housing to people experiencing homelessness has never been more important than at this moment in history, and we appreciate the opportunity to help them realize their goals," said Tim Rosebrock, Vice President of Compliance & Legal Services.

Biltmore, a National Historic Landmark and major employer in our region, carries out the legacy that George and Edith Vanderbilt established in the late 19th century. The Vanderbilts were active in the community, supporting education, agriculture, and programs to foster self-sufficiency for Western North Carolina residents at that time.

Biltmore has a long association with Homeward Bound, beginning several decades ago when Mrs. Mary 'Mimi' Cecil, the Vanderbilts' granddaughter-in-law, served as Homeward Bound's Board Chair as well as an advocate for the organization's compassionate and effective programs. With Mimi's leadership and support, then Executive Director Martha Are helped to found the NC Coalition to End Homelessness, a statewide membership association committed to better meeting the needs of homeless citizens through targeted advocacy and increased public awareness.

Today, Biltmore continues that tradition of community involvement and support to the people of Asheville and Western North Carolina. The company focuses philanthropic efforts on social, economic, and environmental goals as well as partnerships within the state's western counties to provide assistance for people in need, food and farming, and the preservation of natural and cultural resources.

FAITH COMMUNITIES

Abernethy United Methodist Church

Asbury Memorial United Methodist Church

Biltmore United Methodist Church

Black Mountain Presbyterian Church

Calvary Baptist Church

Central United Methodist Church

Community on Columbia - The Block

Congregation Beth Israel

Connection Point Church of God

Episcopal Church of the Holy Spirit

First Baptist Church Asheville

First Presbyterian Church Asheville

Grace Christian Fellowship

Grace Episcopal Church

Jubilee! Community

Montreat Presbyterian Church

New Hope Presbyterian Church

Presbytery of WNC

Red Clay Creek Presbyterian Church

Skyland United Methodist Church

St. Luke's Episcopal Church

Starmount Presbyterian Church

Tried Stone Missionary Baptist Church

Trinity Church of Lewisburg

Trinity Episcopal Church

Warren Wilson Presbyterian Church

Women of the Evangelical Lutheran Church in America

BUSINESSES

48 Biltmore Ave LLC DBA Chestnut

Aeroflow, Inc

Allen Tate/Beverly-Hanks Realtors

AML Property Group LLC

Asheville Guitar Bar

AvL Technologies

AVLFEST LLC

Barringer Construction, LLC

Beverly-Grant

The Biltmore Company

Bionic Man Painting

Blue Cross Blue Shield of North Carolina

Brooks Howell Home Resident Co

Carolina Mornings Vacation Rentals

Chevron

Cisco Foundation

The Corner Kitchen

Earl and Bettie Fields Automotive Group

Foundation, Inc.

Envision Eyecare

F.W. of Knoxville 1, LLC (First Watch)

First Horizon Bank

Green Line Media

HCA Healthcare / Mission Hospital

Heartwood Realty

Holox Management LLC

HomeTrust Bank

Infinity Wealth Management

JAG and Associates Construction

Karis Management Group

Keller Williams Professionals

Mast General Store

Merck Foundation

Microsoft Matching Gift Program

Mountain Veterinary Radiology

Mr. Rooter Plumbing

New Belgium Brewing Company

NVIDIA

The Orange Peel

PlumDog Mortgage

PNC Bank

Prestige Subaru

Quility Holdings

Rabbit Rabbit

RedRover Company Memphis LLC

Robert L. Thomas Sales Inc.

Salesforce.org

Thrivent Financial

Town and Mountain Realty

Truist Bank

West Asheville Aesthetics & Wellness

Westmoreland and Scully LLC DBA

Wicked Weed Brewing

Winona Menopause Treatment

DONORS

Joshua Aaronson
Jim and Diane Abbott
Joshua Abrams
Kathy Abretske
Joseph and Sylvia Accardi
Zachery Adam
Joseph Adamo
Erin Adams
Nina - Barbara Narozny - Adams
Cathy Adkins
Rodrigo Afanador
Maureen Agro
Trevor R. Drake and Anne R. Albright Fund
Kristin Aldridge
Jean E Alexander
Cynthia and Jeff Alleman
Able Allen
Benjamin Allen
Lisa Allen
Bradley Allen
Dick and Judy Allen
Shirley and David Allen Foundation
Paul and Brenda Allen
Vinit Allen
Margie Allison
Marla Allred
Mary and Darrell Alm
Jay Alsaadi
Mollica Am
Laurel Amabile
Rachel Van Amburgh
Margot Ammidown
Sharanya Ananth
Harry Anbender
Cecil Anderson
David and Eleanor Anderson
Mary Anne and Douglas Anderson
Tara Anderson
Howard and Angela Anderson

Heather Angel
Jillian Angeline
Steve Angst
Irene Anthony
Martha Are
Daniel Areyzaga
Alison Arkin
Scott Arkin
Laura L Arksey
Gracen Armendariz
Barb Arnold
Brad and Diane Arnold
Thomas and Gene Arnold
Teresa and Rick Arpin
Erika Arroyo
Stephen Aschmann
Kenneth Ashe
Eleanor Ashton
Jasmine Ashton
Harrison Atkinson
Ted Atkinson
David and Sydney Atkinson
Bo Attwood
Teria Atwood-Smith
Jessica Auge
Nina August
Joe and Cheryl Aull
Gregory Ausland
Cynthia and Bruce Austin
Larry and Cheryl Avery
Margaret M. Averyt
Emily Axtman
Rebecca Ayres
Sylvia Baba
Victoria Bader
Charles and Stephanie Baer
Elaine and Rick Bagley
Abdulai Bah-Jalloh
Lynn Bahan
M. Louise Bahnson

Linda Bain
Kenneth and Karen Bain
Linda H Bair
Amber Baker
Dominique Baker
Joanna Baker
Pat and John Baker
Karen Baker
Randy Siegel and Don Baker
Aditya Balaram
Kemp Baldwin
Thomas and Janny Baldwin
Dana Balick
Earl Ball
Bob Ballard
Travis Banks
Vicki Banks
Beth Bansen
Whitner Banta
Charles Barber
Lyn Barlow
Randall Barnett
Ruth Barnhardt
John Bernhardt Jr.
Chase Barnhill
Gary Davis and Gerri Barraco
Cynthia Barrager
Mr. and Mrs. Dana E. Barrager
Mark Barrett
Winnie Barrett
Jim and Sharon Barrett
Phebe Barth
Bruce and Genevieve Bartlett
Julia Barton
Lynn and Josh Baru
Roxanne Barzone
Julie Moran and Robert Baschnagel
Everette Bass
Nancy Bass
Patricia and Glenn Bass

Sylvia Bassett

Barbara and James Bassler

Elli Schmeltekopf and David Bate

Paul Bator

Marie Bauer

Wendy Baughman

Lenore Baum

Michael Baumann

Shirley Bavonese

Elisabeth Bayer

Mike and Terry Beamer

Julie Bean

Susan Bean

Meriwether and Croom Beatty

Julia Beauchamp

Steven Beck

Evelyn Becker

Ellen Beebe

Alex Beecroft

Christopher Behm

Bonita Beier

Gregory Beier

Matthew Belknap

Mary Bellamy

Christofer Bendik

Barbara and Jacque Benisch

Chelsea Benitez

Lyn Benjamin

David and Tonya Bennert

Marni Berg

William and Karen Berkeley

Randy Bernard

The Berry Foundation

David Berry

Charles Fink and Cynthia Berryman-Fink

Aaron Bessey

Hector Betanzos

Stephen and Joanne Betso

Martha Bickwermer

Diana Bilbrey

Julian and Martha Biller

Jen and David Billstrom

Lauren Birch

Susan Bird

Mary Beth Bird

Margaret Bishop

Regi and Katherine Blackburn

Elaine and Dan Blake

Marisa Blake

Mary Grace Blake

Andrew Blanchard

Vicky Blanché

Cindy Blanco

Cynthia Bland

Andy Blanks

Pam Blessman

Lawrence Blinn

Michael Bloom

Betty Blote

Linda Blue

Patsy Thompson and Ernie Bodie

Jesse Boeckermann

Kathleen and Michael Boff

Danica Bogicevic

Doralee Bohner

Frank Boles

Joanna Bolick

Mikal Bonilla

Barbara Bonito

Michael and Sally Booher

Elissa Booras

Gordon and Mary Booth

Savannah Boothe

Sid and Deanna Border

Meredith Borders

Cynthia Shealy and Greg Borom

Dana Bosk

Ann and David Bottomy

Bill Boughton

Victoria Bouloubasis

Nancy and Terry Bourne

David and Laura Bourne

Lucy and Larry Bowen

Aarti Bowman

Ross Bowman

Melinda Boyd

Martha Miller and William Boyd

Minda Boyer

Jennifer and Travis Boyer

Erin Boyle

Meredith Boyle

Molly Boyle

David and Marti Boyles

Marisa Braccia

Nancy Bracken

Claire Bradley

James and Susan Brasfield

William Brasington

Barton Brass

Maggie Braswell

Mike and Deborah Breck

Peter Breen

Andrea Brennan

Stephanie Brereton

Victoria Breza

Elizabeth Bridgers

Numa Briet

Angelica Brill

Todd and Elizabeth Britton

Mikael Broadway

Alan and Stephanie Brock

Laurence Broder

Leah Broker

Brookedge Family Charitable Fund

Heather Brooks

Katrina Brooks

Hannah Broome

Lindsay Broughel

Sharon Broussard

April Brown

Doug Brown
Era H Brown
Karen Brown
Leila Brown
Maria Alexandria Brown
Norma Duran Brown
Shirley Brown
David Goldsmith and Janice Brown
Joseph Brown
Ken and Ida Brown
Kirk and Shelley Brown
Philip and Donna Brown
Charlotte Caplan and Michael Brubaker
Joe and Janice Brumit
Jan Brunk
Robert Brunk
William and Nita Brunner
Maria de Bruyn
Douglas Buchanan
Carolyn and Steve Buchanan
Teresa and Tommy Buckner
Mary Buckwalter
Mary Bell Bulwinkle
David Burch
Carey Burda
Bob and Lynn Kieffer
Joanne Burke
Linda Burke
Nathan and Anne Burkhardt
Susan Burns
Thomas Burre
Maria Burril
Terrence Burt
Richard and Ann Bury
Kathleen Busby
Sally and Russell Bush
John and Kathryn Busse
Nancy and Robert Butler
Liz Button
Clay Byers

Phoenix Byrd
Jones and Sandra Byrd
Caroline Byrne
Michael and Libby de Caetani
Jamie Cain
Margot B. Cain
Alexandra Caldwell
Rebecca Caldwell
Liza and Jack Caloras
Barbara Campbell
Elizabeth and Alvis Campbell
Kent Campbell
Kevin Campbell
Robert and Anne Campbell
Allan and Nancy Campo
Jose Antonio Velez Canales
Gregory Candell
John and Mary Cannon
James Cannon
Scottie and Tom Cannon
Susan Cannon
Walter and Elizabeth Cantrell
Chris and Geraldine Canty
Kelly Caputo
Ruben Carbajal
Kelly Carlson
Justin Carmona
Katherine Carpenter
Mike Carpenter
Olivia Carpenter
William and Terri Carpenter
Jean Carrigan
David Reid and Jane Carroll
Deborah Carroll
Joseph Carroll
Rebeka Carson
Randy and Martha Carson
Kristin Carswell
Sarah and Kyle Carter
Sarah Jane Casciato

Abigail Cassario
Sylvia Cassel
Virginia Boyle and Jean Cassidy
Heather Blair and Michael Casterline
Thomas Caston
Louise Cate
Carl and Kaye Catoe
Karen and Brian Cavagnini
Sandy Cazemier
Carly Centanni
Takeout Central
Jorge and Carol Cestero
Laura Chadwick
Shona Chakravartty
Sarah Chan
Angie Chandler
Joel Chandler
Adrianne Chang
Cindy Chantaca-Morua
Nancy Chapin
David Chappell
Marcelino Chavez
Barry Cheney
Erin Chester
Cinda Chima
Richard Cho
Michael Monks and Marietta Christie
Ruth Christie
Diane Christopher
Stephen Christy
Hynek Chudomel
Sarah Chun
David Ciener
Roseann and Douglas Cioce
Lorraine and Bob Cipriano
Michelle Citrin
Charles St Clair
Andrea Clark
Andrew Clark
Brenton Clark

Edward and Sandra Clark

Lucia Corsi Clark

Michael and Amy Clarke

Stephanie Clavet

Vera Clay

Marty Clemons

Amanda and William Van Cleve

Carole Click

Charles and Patricia Sloan Clogston

John and Lisa Clough

Madelyn Eve Clow

Jeffery E Cobb

Caleb Cochran

Ellen Cochran

Julie Cochrane

Leah Cockerham

Clint Cogburn

Anthony and Sherrye Coggiola

David Cohen

Lynne Harty and Stephen Cohen

Sara Cohen

Gretchen Miller and Dave Coie

Emily Colby

Cayla Colclasure

Nancy Cole

Pat Cole

Devlin Cole

Griff Colegrove

Kent Coleman

William Coleman

Amanda Collins

Bobby Collins

Jane Bramham and Camilla Collins

Jane J. Collins

Tim Collins

Michael Ashmore and Patrick Colunga

Dan and Meredith Comer

Sue Commander

Mary Jo Conklin

Bruce & Beverley Connell

Nicole Conway

Lynn Cook

Marilyn Cook

Riley Cook

Elizabeth and Bob Cook

Ludmila Cooper

Janey Cope

Elizabeth Copenhaver

David and Linda Copley

Jordan Coppinger

Cathy Corbett

Jane and Thomas Cordell

Spencer Cordero

Chelsey Core

Deborah Cornelius

Emily Corner

Diana and Charles Costanzo

Katherine Courtney

Billy Covert

Susannah and Kenny Covert

Carrie and Steve Coward

Sharon and Howard Cox

Thea Cox

Ann and Meg Coxe

Alyssa Cozad

Elizabeth Cozart

Tiffany Craft

Carol and Carlton Craig

Nancy Craig

Rebekah Craig

Chip and Wendy Craig

Carrie-Welles Craven

Victoria Crawford

Natalie Crespo

Tammy Creswell

Denny and Kay Crews

Chastain Criswell

Linda Crivaro

Philip M. Croll

Devon Crosbie

Brown Crosby

Jody Cross

Charles and Karen Crutchfield

Jodi Cruz

Stephanie Cruz

Mary and Neil Culbertson

John Vanderstar and Elizabeth Culbreth

Pamela Culp

Charlie and Jeanne Cummings

Joe Cummings

Joseph Cummings Jr.

Betsy Cunagin

Patricia Cunningham-Woolf

Walt and Kay Curl

Brad Currie

Grace and John Curry

Paul Curtin

Rose Cusella

Mary Ward Cutrell

Gabriel D'Amours

Stephanie DSouza

James and Anne Dale

Matthew Dameron

Bobbie Daniel

Jill Daniels

David Danley

Minda Daughtry

Tiffany Davall

Brendan and Jennifer Davey

Frances Davi

Alicia Davis

Betty Davis

Jessica Davis

Louise Davis

Marcie Davis

Paige Davis

Ronna and Lynn Davis

Bob and Dottie Davis

Cheryl and Ron Davis

Madeline Davis

Terry Davis
Susan Davison
Julianne Day-Evers
Judith DeCarme
James DeGeorge
Charles DeLaney
George DeMarco
Michelle DeMilia
Andrea and John DeWitt
Mitchell DeYoung
Darilyn and Lee Dealy
Kimberly Dechant
Mary E Decker
Debra Decoteau
Jeanette Degiovanni
Philippe Deguise
Jeffrey and Jan Dektor
Holly Demuth
Susan Denham
Richard Van Deusen
Rick and Elizabeth Devereaux
Linda Devlin
Ashley Dexter
Jessica Deyoung
Joseph DiSerafino
Wendi Bryant Diamond
Rose Linda Huezo Diaz
Victoria Dibble
Lea Dickinson
Rob Dickson
Warren Dickson
Tom and Pam Diener
Alyssa Dill
Amy Andrea Dillon
Whalen Dillon
Rebecca Dion
John and Susan Ditterline
Keri Dixon
Leah Dixon
Frank and Cathie Dodson

Frank and Maria Dolbow
Virginia Dollar
Cindy and Tom Donahue
Robert Donaldson
Eric Donin
LeeAnn Donnelly
Sondra Dorn
Susan and Matthew Dotson-Smith
Chelsea Dougherty
Sean Downey
Jessica Downing
Erin Doyle
Christine and James Dozier
Tiffanie Drayton
Karolina Drozd
Scott Druhot
Peyton Drumheller
Wayne and Angela Drummond
Angela Duckett
Ada F. Dudenhoeffer
Susan Dufon
Kenny Dukes
Richard Keith Dukes II
Jackie Dula
Darly and Michael Dulion
Daniel O Duncan
The Dunham-Lazovik Charitable Fund
Dunn Family Fund
Kristin Dunsky
David Nash and Virginia Duquet
Collin Durratt
Dylan Dutch
Ted and Terry Van Duyn
Violet Dwoinen
Athena Dygert
Sara and Dawson Early
Mary Early-Zald
Francis and Brad Earnhardt
Judith Easley
David Easton

Janet Eaton
Barbara Eberhard
Eliana Echols
Dave Eckblad
Richard and Bridget Eckerd
Karin Eckert
Judi Edelman
Hillary Edgin
Amanda Edwards
Rusty Edwards
Travis Edwards
Dorothy Eggan
Virginia Eggert
Jana Eilermann
Peter Eisemann
Gaynor Eisenberg
Richard Eisenberg
Scott and Traci Eisner
Laurie and Rudolph Ekstein
Meredith Eldred
Tara Ellenwood
Beth Ellers
Duncan Elliff
Erin Elliott
John and Marsha Ellis
Kerry Ellis
James M. Ellis
Lauren Elliston
W. Leon Elliston
Langley and Steven Ellmann
Vivian Ellner
Miles and Millie Elmore
Linda Emerick
Carol Emmet
Bruce Emory
Tim and Kim Emory
Izy Engel
Phyllis and Scott Engels
David and Mary Erb
Denise and Bruce Ertell

Laura and Robert Esleeck

Victor Dostrow and Renee Ethridge

Barbara M. Etsell

Jane Evans

Jodi Evans

Laura Evans

Nia Evans

Lila Mae Ewing

Elisa Ezor

Jessica Fabro

Kristopher Fador

Vic and Sharon Fahrer

Kevin Fallon

Peter and Dori Fama

Patton, Grimes, and Blomberg Families

Bird Meys Family

Katie Farhat

Bolling Farmer

Mary Farmer

Beni OHMish Farmz

Brit and Lyle Farthing

Sally Fasman

Rachel Fautz

Ann Von Brock and Sherman Fearing

Dana Fehsenfeld

Ben and Libby Fehsenfeld

Tom and Carolyn Fehsenfeld

Wendy Feinberg

Scott Feiner

Trace Fender

Michael Fenn Charitable Gift Fund

Andrea Fenoglio

Ernest and Shirley Ferguson

James and Kate Ferguson

Lily Fernald

Nicole Ferrell

Emmie Field

Keith Fields

Nathan Fields

Terry Fields

Marshall and Heidi Fields

Heather Figgins

Theodore and Judy Figura

Rachel Figurasmith

Anthony Finelli

Gary Fink

Paula Finneron

Dahlia Fisch

Eva Fischer-Rech

Jenifer Fisher

Karen Fisher

Iris P Fisher

Susan K. Fisher

Thomas Fisher

Kelly FitzGibbon

Chas Fitzgerald

Charlotte Fitzpatrick

Patricia Fitzpatrick

Brian and Amy Flagler

Bill and Georgia Flarsheim

Ben & Mame Fleming

Edward Fleming

Anita and Hayes Fletcher

Nancy Flippin

Carmen Flores

Melanie Flores

Randy and Beth Fluharty

Charles Flynn

Linda Flynn

Nora Flynn-Mclver

John Fobes

Alice F Foeller

Leslee Fontaine

Brandon Fonville

Laurel Foote-Hudson

Heidi DuBose Fore

Abigail Fortune

Brielle Foster

Jacquelyn Foster

Nigel Foulds

Sandra Foundas

Perry Fowler

Frank Fox

Karin Fraade

Allistair Francisco

Jim and Patty Frankfort

Linda Frankl

Barbara Fraser

Susan Frazier

Emilie and Ron Freeman

Ellenor and Paul Frelick

Hayley French

Erin and Dale Freudenberger

Barb and Kevin Frew

Kerry A Friedman

Kate Frost

Curtis Frye

Rei Makino Fuller and Bradley B. Fuller

Tracy and Paul Fulton

Cheryl Fultz

Settlage Family Giving Fund

Brittany Gabey

Monte Gaillard

William Gaddy

Gemma Gaisano

Robin and Gerald Gaiser

Thomas Gallo

Marsha Gallow

John Gallucci

Timothy and Joan Galvin

Gertrude Galynker

Robert Gant

Miles and Willa Garber

Rose Garfinkle

Suzanne Garland

Victor Garlock

Ramona Garner

John and Janet Garrett

Adam Garry

Tanya M. Gary

James and Julia Gaskin

Valerie True and Jason Gast

Douglas Gates

Latrece Gatewood

Robert and Janice Gelder

Suz Genz

Paul and Sandra Geoghegan

Ken and Nancy Gepfert

Dan and Barbara Gerber

Cindie and Terence Gertz

Nikki Giachetti

Grant Hellyer Richard Gibbons

Doris Gibbs

James and Jill Gibson

Bob Giduz

Christine Giglio

Terry S Gillespie

Paul and Merrill Gisondo

Mary Gitzendanner

Penelope Glass

Patti Glazer

Mehitabel Glenhaber

Ellen Glenn

Dylan Glover

Chris Goering-Stockwell

Steve Gigliotti

Mary Alice Goforth

Anna Golden

Meredith Golden

Zoe Goldenberg-Hart

Stephen Goldman

Melba Goldsby

Claude Goldsmith

Frank Goldsmith

Hannah Goldstein

Maxwell Gollin

Helen Indalencio Gomes

Jeffrey Good

Rona and Harold Goodman

Gooding/Pekar Family Fund

Tom and Marque Goodrich

Laura Goodwin

Miegan Smith Gordan

Michael Gordon

Sarah Gorlitz

William Gosnell

Erika Gosser

Billy Gottenstrater

Mr. and Mrs. Jeffrey A. Gould

Sarah Oram and Stephen Grabenstein

Kathleen R Graham

Caleb Graham

Peggy Grant

Richard Grant

Carson and Judith Graves

Neal Graves

Miller Graves

Jacob Gray

David Greiner and James Gray

Laura Greeley

Steven C. Garland and Edna A. Green

Alan Green**Bernice and Arnold Green**

Craig N Green

Marissa and Darren Green

Mollie Green

Sue Greenberg

Hillary Greene

Hugh and Susan Greene

Carol Greenspan

Zach Greenwald

John and Barbara Gregg

Sarah Gregory

Clementine Gregory

Sally and Bob Gremillion

Stephen Grier

Bill and Alice Griffin

Susan F. and John T. Griffin

Janet Griffith

Sherry Griffith

Adam Griffith

Michael J Grillot

Paula Grillot

Alice Grimm

Gus Grissom

Willis Trey Groce

Pamela Grosicki

Janice Gross

Marie Grubbs

Marion Guck

Reena Gupta

Kara Gustaveson

Anna Guthy

Claudia Cady and Boone Guyton

Carolyn Haag

Terri Haas

Brian Haenke

Elizabeth and Thomas Haggerty

Laurie and Steven Hagstrom

Jenny Hahn

Bree Hailemariam

Jessica Hair

Jeanne Hairston

Eunice Hakanson

Zadye Hakim

Amanda Hale

Jeremy Hale

Ginna Hall

Grace Hall

Greg Hall

Jennifer Hall

Lisa-Gaye and Michael Hall

Megan Hall

Amanda Hall

Linda Hall

Kay and Todd Hallawell

Spenser Hallmark

Eugene Ham

Ellie Hamburger

Judith Hamill

Catherine Hamilton

Marisa Hamilton

David and Karen Hamilton

Irene Hill Hamly

Mike and Sue Hammer

Judy and Terry Hamrick

Roxanne Hancock

Eleanor Hand

Gail Handel Family Foundation

Joseph and Debra Hanig

Rhonda Hanley

Bill Hansen

Victor and Angelika Harabin

Neal and Amy Hanks

Nicole Haragos

Bethany Harding

Kristina Hargis

Patty Harpe

Angela Harrell

Sherri Harrelson

Jason Harrington

Madeline Harrington

Blaise Harris

Erin Harris

John Boneparth and Gail Harris

Larry and Luann Harris

Linda Kinsinger and Russ Harris

Susan Harrison

Cindy Harry

Pam Harting

Karen Hartman

Mark Hartmann

Pilar Hartmann

Monika Hartsel

Howard and Harriett Harvey

Paul Harvin

Doris Harwitz Trust

Christopher Fink and Katherine Haskell

Jeffrey Hassel

Meda Hatcher

Lynn and Ronald Hathcock

Jane and Tom Hatley

Heather Hatmaker

Deborah Hauser

Peter Hawes

Judy Beck and Jerome Hay

Kelly Haydon

Mary Hayes

Tim and Alicia Heacock

Elizabeth and John Heafield

Kathleen and John Healy

Hannah Hearn

Memri Hearn

Tom and Patricia Hearron

Sara Hedden

Kevin and Jennifer Hefner

Leslie Heidinger

Robin Heimerman

Jeffrey and Phyllis Heller

Nancy Helms

Alice Helms

Camille Helmuth

Rachel Helton

Rena and Bill Henderson

Vandora and Mildred Henderson

Rebecca Henderson

Harold Hendrickson

Jeff Henkemeyer

Seth Heno

Jed Henry

Roger Henry

Susan Henry

Kristy Henscheid

Theresa Hensley

Kevin and Vanonda Heron

Natalia Herrera

Owen Hershey

MJR Herzog

Charlotte Hess

Sarah Hess

Jo Nan Hester

Larry Heyl

Hibbard Philanthropic Fund #6

Roger and Rosalyn Hibbard

Kathryn and Jeffrey Hicks

Claire Hifferty

Susan and Richard Hildebrandt

Laura Hilger

Andrew Hill

Carolyn and Ben Hill

Mary Hill

Pamela Hill

Brad Hillman

Greg and Linda Hillman

Lisa Hillmann

Richard Shields and Patricia Hillmann

Rachel Hines

David Hirsch

Kyle Hislip

David and Shannon Hitchcock

Melissa Hoagland

Jim and Nan Hobson

Catherine Hock

Erica Hodges

Sara Hodges

George and Jennifer Hodges

Douglas and Margie Hoell

Christi Hoffman

Derek and Taryn Hoffman

Georgia Hoffman

Jim Hofheimer

Eunice Holbert

Gregory Holden

Amanda L. Holland

Bobbi Holland

Sarah Holland

Chloé Holleschak

Fred & Lisa Hollins

Robert and Linda Hollis

Abby Hollman

Abby Holmes
Stanley and Sandra Holt
Michele Hooks
Barbara Hornaday
Thelma M Hornaday
Linda Horne
Randall Horne
Robert and Mary Van Horne
David Houck
Allison Hewatt Houk
Jeff Houser
Dawn Howard
Catherine Howell
Sarah Addy Howell
Richard Stewart and Linda Howell-
Stewart
Rory Howes
Lacy Hoyle
Su-Shen Huang
Heather and Frederick Hudson
Ken and Jane Hughes
Claire and Hugh Huffstutler
Michele Huggins
Barbara Hughes
Bruce Hughes
Colleen Hughes
Ellis Hughes
Holly Hughes
Theodore Hughes
Evelyn Hultberg
Virginia Ginny Hunneke
Michael Hunnicutt
Heather Hunsinger
Donna Hunt
Horace Hunt
James Hunt
Melinda Hunt
Riane Hunt
Kirsten Hunter
James Hunter

Doretha Huntley
David Hurand
Richard Hurley
Eileen Hutchison
Crosby Ignasher
Jo and Bruce Ikelheimer
Wendy Ikoku
Ruth and Otto Ilg
Nadya Ilionova
The Potato Fund Inc
Jack Hurwitz and Penelope Ingalls
Elaine Ingle
Davis Ippolito
Peggy Johnston and Ben Irvin
Lisa Isenhardt
John Isgrig
Claire Ittner
Victoria Iturri
Sally Broughton and Toby Ives
David and Thorunn Ivey
Thomas J. and Nancy H. Izzo
Monica Jacks
Danielle Jackson
Armel Jacobs
Cynthia Jacobs
Hal Jacobs
Josef Jaeger
Richard Jaffe
Hannah Jaffee
Jonathan James
Crystal James
Jamesson Family Charitable Fund
Chipp R. Jamison
Holly Jamison
Robert Jamison
Thomas Jamison
Alice Jamison
James Jarratt
Denise Aureore Jean
Sarah Jeffries

Melissa Jeffris
Jelonek Fund
Kirsten Jenkins
David Jenkins
William J Jernigan
Richard Jerue
Carrie Jobe
Amy Johns
Brandon Johnson
Caitlin Johnson
David and Marilyn Johnson
Frances "Jo" Johnson
Johnson and Johnson
Jordan Johnson
Laura Johnson
Mary and Randy Johnson
Ralph and Victoria Johnson
Sara Johnson
Carrie and Rick Johnson
Elizabeth Johnson
Leigh Ann and Bruce Johnson
Ellie Johnston
Bill Jonas
Holly Jones
Michael Jones
Sally A. Jones
Shirley Jones
Diane Jones
Ashleigh Jordan
Rev. Shannon Jordan
Lois Jost
Andrew Joyce
Sherry Kaas
Katherine C. Kaderabek
Anne and Christian Kaltreider
Kali Kambouriglos
Kayla Kania
Harry Brown and David Kanis
Bob Kaplan
Harold E. Kaplan

Vinod and Stanislaw Kapoor
Samantha and Brad Kappalman
Tom Karemaker
Rachel and Jason Karo
Keren Karp
Jean and Joe Karpen
Elizabeth Kartiganer
Elizabeth Kastor

The Kates Foundation

Josh Katz
Gary Kaupman
KCG Charitable Fund
Beth and Doug Kearney
Patsy Keever
William Kellum
Danny and Grey Kelly
Macia Mills Kelso
Jon and Ann Kemske
James Kennedy
Patricia Kenyon
Rebecca Kepner
Wayne Keppinger
Cora Kerber
Paul Kerlin
Matt and Caswell Kern
Robert Kerr
Mary Ellen Kesel
Candice Key

Bob and Lynn Kieffer

Sandra E. Kilgore
Patricia Killion
Stephani Kilpatrick
John Kimberly
Kimbrough Charitable Contribution
Fund
Allan and Anne Kime
Erin King
Janet King
Samantha King
Guy and Suzanne Kirby

Colin Kirkman
Patrick L Kirwan
Betsy Kitslaar
Hannah Kitt
Adrienne Kittle
Mandy Kjellstrom
Virginia Klemens
Kathie Kline
Kirsten Klym
Robert and Jane Knight
Helen Knouf
Caroline Knox
Jessica Knox
Max Kobernick
Kristine Kocek
Gregory Koch
Ruby Koch-Fienberg
Lynn Kochanek
Frank Koconis
Heidi Koester
Maximilian Koger
Mike Kohnle
David Von Kohorn
Jennifer Kondal
Michelle Kondas
Virginia Konopka
Hannah Koralý
Dana Kornatz
Elizabeth and Georgi Kostava
Michelle and Brad Kostelich
Susan Kostenko
Yogin Kothari
Carolyn Kotlas
Carolyn Kovash
Crysten Kragel
Eli Kramer
Patricia S Krause
Theresa Krebs
Nancy Kreimer
Lauren Kriel

James Kruidenier
Gary Kukulka
Reema Kumar
Kimlee Kung
Timothy Kurtz
Norma Kwee
Wilder LaFond
Jean and Katherine LaFrance
John and Olivia LaMotte
Meta and Albert Laabs
Karen Lachow
Kacey Laird
William Laity
Susan Lake
Marilyn Lalor
Sheri and Mike Lalumondier
Elizabeth Lamb
Karen Lambert
Eli Lamport
Robert and Debbie Lampton
Donna and Charles Lanahan
Julie Landers
Michael Landis
Maury Landsman
David and Pamela Lane
Kathleen Lang
Milissa and Michael Lang
Emily Langdon
Marc Langweiler
Jane Laping
Cassidy Lapp
Steven Lapsley
Casi Larish
Brian Larkin
Alan and Gillian Larson
Astrid Larson
Andra Larson
Sarah Lashlee
KJ Lauck
Max Lauer-Bader

Daniel Laurison

Carol Lawrence

Jill and Joe Lawrence

April Lawrentz

Jackson Lawrie

Scott Laws

Jeffrey Lawson

Aileen LeBlanc

Sydney Lea

Susan and David Leader

Chad Leatherwood

Judy Leavitt

Carol Groben and Doug Lebbon

Karen Leckey

Leslie Long and Lynn Lederer

Heather and Bill Lee

Cheryl Kruger Lee

Dan Lee

Debbie Lee

Heather Leenders

Merrienne Leff

Kathy Meacham and John Legerton

Walter Leginski

Holly Legros

Barbara and Stephen Lehrer

Peter M Leifert

Bruce Leininger

Hank Leininger

Ginny Lentz

Beth and Phil Leonard

Beckie Leone

Jane and Ned Lesesne

Geraldine Leslie

Thomas P. Leslie

Betty Letzig

Sage Levene

Susan and Steve Levenson

Andrea Leverentz

Rebecca Levi

Nancy Levine-Schatz

Susan and Paul Levy

Cliff and Linda Levy

Carolyn Lewellen

Elise Lewis

Gretchen Lewis

Thomas and Harriet Lewis

Trevor Lewis

Christina Lief

Jane Light

Glenn and Patti Liming

Jessica Lin

Emily Lindauer

Lisa and Mark Lindsay

Sandy Lindsey

Alan Lingerfelt

Linnea and Steve Linton

Donald Lisnerski

Matthew Lichtinger Giving Fund

Bailey Little

Karen and Lauren Livingston

Jamie and Neal Lloyd

David M. Lockett

George and Joanne Lofquist

Chance Lombardo

Christine Longoria

Lawrence Lordi

Joel Lourie

Cliff Love

Suzanne Love

Barbra and Keith Love

David Love

Les and Catherine Love

Emily Low

Rebekah Lowe

Michelle Lowry

Rosalyn Lucas

Jean Marie Luce

Paula O'Hara and Joe Luna

Sophia Luna

Allen Lundy

Lunn Family Fund

Julie and Jack Lunn

Tom and Lynn Lupei

Lindsey Lupfer

Ryan Lurvey

Alexandra Lusak

Gregor Salmon and Sarah Luther

Sue Luttrell

Evelyn Luviano

Tiffany Ly

Amanda Lyda

Kristen and Jonathan Lyda

Sandra and Ken Lyles

Myra Lynch

Morgan MacDonald

Scott MacGregor

Ellen Kaczmarek and Gary MacPeck

Carol Macrae

Susan and William Macy

Cindy Madden

Nancy and Tom Maher

Megan Maizel

Jessica Malmberg

Alyssum Malone

Laurence Maloney

Diane Mance

Rahm Mandelkorn

Marcin Manek

Steven Manfred

Lee Anne and Peter Mangone

Chris and Rick Manheim

Marguerite Manicone

Ginger Mann

Jodi Lynn Mann

Virginia Mann

Janet and Dennis Mann

Marty and Kathryn Mann

Gary and Margie Mannies

Mary Lynn Manns

Elena Mansour

Alexandra Marchosky
Bugno Marconi Charitable Fund
Pamela Mard
Bethany Marker
Barry Markovsky

Jim Hartye and Barbara Marlowe

David and Suzanne Marsh
Frank H Marshall
Michele Marshall
Sara Marshall

Clarissa and Ryan Marshall

Miranda Martell
Ann Martin
Danielle Martin
Judy J Martin
Monroe Gilmour and Fern Martin
Sylvie and Robert Martin
Thomas Martin

Joel and Carole Martin

Lance and Anne Martin

Hailey Martinez

Pedro Martinez

Ted Marusarz

Marie Mascherin
Sofia Mascorro
Sidney Mashburn
Ruth Masland
Kim and Judy Masnick
Bethany Mason
Hans and Lisa Mateboer
Anthony Mathena
Richard Mathews
Kenneth Brame and Judy Mattox

Jacqueline Maurer

Susan and Jay Maveety

Jackson Maxey
Julie May
Allison T. May
Susan and Richard Maybin
Claudia and Greg Mayer

David and Jessica Mayeux

Julie Mayfield

Maria Mazzio
Joy Mbong
Tim McCall

David McCartney

Patricia and Tom McClellan

Sue and Raymond McClinton

Ken and Chris McClung

Joy and Richard McConnell
Mallory McConnell
Tricia McCorkle
Tracy McCormack
Kristine McCoul
Tracey McCrain
Leslie McCrory
Kelly McCusker
Keith McDade

Robert McDaniel

Raeann McDonald

Laurie McDonald

JP McDonough

Sara McDougall
Sarah McElrath
Dale McEntire
Jonathan McGinnis
James McGivney

Jeanne and Jim McGlinn

Antonio McGovern-Contreras
Ricky McGrath
James Samsel and Kim McGuire

David and Marjorie McGuirk

Michael McInerney
Arielle McIntyre

Anne McKenzie

Paul McKeon

Melanie McKinley
Richard McKinley
Virginia McKinley
Micah McLain

Ronald and Forest McLean

Will and Caroline McLean

Jill McLeigh

Brice McLeod

Gail Perkins McLeod

Erin McLoughlin

Cindy and John McMahon

Patsy and Ronnie McNatt

Bruce McNeel

Kerney and Jane McNeil

Terry and Alexandra McPherson
Janis McRae

Ashley Mclean

Elizabeth McInerney

Flora Medawar

Donna Medeiros

Medyn Charitable Foundation

Rose Meehan

Alexandra Meek

Khatija Meghji

Alexis Meister

Melissa Melton

Ramona Melvin

Mirtha Mendoza

Ladd Mengel

Denise Mennitt

Stephen Mercier

Robert and Jan Meriwether

Robin Merrell

Rob and Lee Merrill

Edwina and Fred Messer

Michael Metzger

Fred Meyer

Travis Mickey

Jim and Libby Mijanovich

David Milan

Dorothy Miles

Lisa Millar

Alexis L. Miller

Alice and William Miller

Elizabeth R Miller

Eric Miller

Leilah Miller

Rebecca Miller

Leah Miller

Rolfe Miller

William Ken Miller

Nancy N. Miller-Green

Cindy Mills

Holly and Don Millsaps

Robert and Karen Milnes

Hope Miro

Nora Mishriky

Hanne and Glen Miska

Caroline Misler

Catherine Mitchell

Laura M Mitchell

William and Rhonda Mobley

Betty Modaff

Lou Moffatt

Teresa Moffet

Elise Moffitt

Erik Mohn

Philip Mohr

Donna Monroe

Iva Montgomery

Diane Mooney

Heather and Bill Lee

Betty J. Moore

David Moore

Jean and Michael Moore

Thomas Moore

Sharon Morales

Jennifer Moran

James and Marcia Morehead

Marcela Moreno

Anne Morgan

Charles Morgan

Katherine Morosani

Pamela Morris

Stevie Morris

Geraldine Morris

Jim and Pat Morris

Alexis Morrison

Peggy McEvoy Morros

Michael Morrow

Sarah Morrow

Owynn Morrow

Elaine and Andrew Morse

Jonathan Morton

Madeline and Merritt Moseley

Sara Moser

Win and Tammy Moses

Patti and Joseph Mouer

Lisa Mowery

Daniel Moynihan

Alma Carolina Garzon Mrad

Monique Mueller

Barbara Mueller

Karl Mueller

Jennifer Mullendore

Stacy Mullins

Amanda Mumford

Eloise and Ken Murchison

Catherine Murphy

Charlotte Murphy

Marcia A. Murphy

Sam and Melanie Murphy

Colleen and Larry Murray

Dan and Vicki Murrell

Mary Katherine Myatt

Jonathan Myer

Thomas and Alice Myer

Cierra Myers

Hannah Myers

Sue Ellen Myers

Anna C. Nagy

Melissa Duong and Yuki Namba

George and LaWayne Napoles

Marcus Nappier

Marcie Nash

Jennifer Neel

Marsha Neese

Cristina Negrea

Iulian Negroiu

Becca Neill

Lori Nelson

Margaret Nelson

Heather Nelson

Jonathan and Christie Nelson

Susan Van Ness

Neely and Jim Neu

Peggy Newell

Michael Newham

Marianne L Newman

Amanda Ngo

Noel Nickle

Sylvia Nicks

Cathy Nieman

Lynne Nieman

Dutch O'Connor and Marc Nishino

Beverly Nivens

Mike and Claudia Nix

Oo Nn

Lynne and Rick Noble

Meghan Noel

Phyllis Nolan

Starr Nolan

Sarah Nolte

Sara Nordstrom

Leslie and Cindy Norlin-Thompson

Kathie Norman

Margaret and Edward Normile

Cherie North

Julie and Fred Northup

Heather Norton

Nan Norton

Tracey Novak

Thomas O'Brien

William and Kimberly Ann O'Connell

Amber O'Connor
Patrick O'Duffy
James and Mary Ellen O'Grady
Tim O'Pry
Sarah ODell
Camille Frances OLeary
Madeline Oakes
Tom Oakes
Willoughby Obenchain
Jessica Oelschlaeger
Lisa Olasz
Rich Olejniczak
Kiri Oler
Kyle and Jennifer Olinger
Emma Olson
Rosalind Willis and Greg Olson
Jane and Tommy Opliger
Samuel Orenstein
Sylvia Organ
Jennifer Orndorff
Marjorie Orr
John Osborne
Kristen Osborne
Bill Osowski
Judy Ott
Richard A. Ott
Carolyn Ovaatt
Charlie and Eleanor Owen
Diana Owings
Rebekah Owings
David Packett
Phillip and Christine Page
Maggie Palmer
Allison Panella
Chris and Vasiliki Papakonstantinou
Barry Paperno
Sylvia Pardo
Michelle Paredes
David Parisi
Madeline Parker

Trevor Parker
Jane Yokoyama and James Parker III
Katherine Parkin
Heather Parlier
Jack Parsons
Paul Parsons
Ronald Haynes and Vicki Partin
Nikita Patel
Carol Patenaude
Lewis Patrie
Cathy Kramer and Ken Patterson
Jennifer Paul
Meg Paulsen
Tristan Pavlik
Judy and Joe Pawlick
Michelle and Karl Payton
Jeff Pearsall
Anna Pearson
Tracy Peck
Deborah Pegel
Jennifer Pekarne
Dayna Pelle
William and Sheri Pender
Gael Penland-Paschall
Lois Penn
Mar Pepin
Stephanie Pereira
Chelsea Perez
Rachel Perez
Ashleigh Perkins
Jennie Eblen and Rick Perkins
Stephanie Perles
Steve Pescatore
Andrew Peters
Devon Peters
Peterson Endowment Fund
Terence Petersen
Stacey Peterson
Jennifer Petitt
John and Betty Petkovich

Kate Pett
Virginia Pett
Lisa and George Pettus
Nancy Pew
Robert C Pew
Carol Reed and Barbara Phelan
Carey Philanthropy
Beth and Rick Phillipsen
Barret Phillips
Camryn Phillips
Dawna Phillips
Patricia Phillips
Stephanie Phillips
Betsy and Herbert Phillips
Maxie Phillips
Elizabeth B Phipps
Chase and Clary Pickering
Chuck and Dini Pickering
Adam Pickett
Michael Piechowski
Brett Pierce
Jack and Susan Pierce
Jessica L. Pierce
Kelly and Larry Pierce
Robert and Martha Pierce
Ariane and Robert Piercy
Tony and Kimberly Pierfelice
Gloria Pincu
Vicky Pinney
Ethel W. Piper
Joe Piscotty
David Pitman
Karol and Lawrence Pittman
Becky and Bob Pitts
John and Judy Plant
Kendra Plating
Marian and Thomas Plaut
Pledgeling Foundation
Plescica Family Fund
Cecil and Grace Pless

Barbara Plimpton

Michael Plowman

Robert Poe

Dale Poklemba

Judith & Raymond Polinko

Elizabeth Polter

William (Bill) Pomeroy

Charles Pool

Kimberly Poovey

Jacklyn Tatelman and Nancy Pope

Elizabeth Porritt

Dorothy and Robert Porter

Kelly Porter

Adrienne Crowther and John Posey

Bill Jacobs and Susan Posey

Beth Poslusny

Christie Posner

Linda Poss

Doris Potash

Cat Potts

Robert and Jessica Powers

Roberta Powers

Thomas Praktish

Susan Prescott

Alexis Preskar

Georgia D. Pressman

Christine Price

Lily Price

Katherine Price

Mike Price

Anne Pringle

Jessica Pritchett

Courtney Privett

Caroline and Allen Proctor, Jr.

Rachel Proctor

Rebeccah Propp

Insa Pryor

Francesca Pucci

Andrew Pulsifer

Alwyn Purinton

Pamela Putman

Courtney Quick

Jo Kathryn Quinn

Lori and William Quinn

Daphne RG

Melinda Raab

Garrett Raczek

Chane'I Radden

Iris Radom

Robin Raines

Kit Rains

Donna and Joel Rakower

James Raleigh

Donna Rambin

Karen Ramshaw

Cayanne Ramuten

Eric L. Randall

Hannah Randall

Suzy and Ed Rankin

Fred Raphael

Ranney Family Foundation

Katharine Rasche

Scott and Joan Rasco

Lane Raskin

Kris and Angela Rausch

Drue Ray

Norman Ray

Robert Ray

Roy Ray

Jesse Randy Rea

Catherine Read

Jayda Reams

Bess Redmond

Jorge Redmond

Carol Reed

Jason Reed

Emily Reely

Kimberly Regester

Peter C. Regis

Bill and Sandy Reid

Elaine Reid

Patricia Anderson and Pamela Reid

Holly and Terry Reiling

Matt Reischl

Kathryn Remsen

Lauren Resnick

Thomas Reynolds

Deborah Rhoads

George and Donna Renfro

Christopher and Sandra Rhodes

Sooji Rhodes

Gail Rhodes

William Rhodes

Leslie A Rhyner

Andrew Rible

Stephen Riblet

Mary Lou Rice

Daniel Richardson

Becky Richendollar

Evan Richter

Stephen J Ricks

Jamie Riedesel

Stephen Riedesel

Michael Riesch

Melody and Rory Rigdon

Tom and Lucy Rightmyer

Ann Riley

Jason Riley

Kathleen Riley

Larry and Lisa Riley

Debra Riley

Kymberly Riley

Stephen Rinsler

Jennifer Rish

Susan Fernbach and Jim Rishebarger

Whitney Risner

Gordon and Judy Rittmeyer

Sabrina Rivas

Sara Rivera

Sean Rivinus

Laura Robbins
Lucy Robbins
Pam and John Robbins
Amanda Roberts
Jamyne Davis and Don Roberts
Shearon Roberts
Emily Robertson
Victoria and Ian Robertson
Renee Robinette
Carolyn Robinson
Elizabeth and Thomas Robrecht
**Charlotte Haynes Robuck Family
Foundation**
Jane Roda
Jason Rodrigue
Ryan Rodriguez
Joel Rogers
Stephanie Rogers
Mae Creadick and Nicholas Rogowski
Jean Rohrer
Allison Rollison
Tanya Romanyukha
Peter and Andrea Rosal
Angelica Rosales
Rebecca Rose
Nancy and Timothy Rosebrock
Bill and Marilyn Rosenberg
Carol and Michael Rosenblum
Steve Weissman and Gary Ross-
Reynolds
Amy Rossi
Ronald Rossman
Matthew Rossom
Margot Rott
Joanne and Philip Roudebush
Sandra Rountree
Beverlee Rowland
Catherine Rowland
Isaac Rowles
Tami Ruckman

Ian and Beth Rudick
Robin Rudman
Caleb Rudow
Charlene Rumfelt
Andrew Russ
Bea and Jeff Russell
Brent Russell
Jennie Russo
Raymond and Bonnie Russolillo
April Ryan
Elizabeth Ryan
Matthew Ryan
Clare Ryan
David Bailey and Sherie Ryan-Bailey
Jennifer Braun and Raymond J. Ryan
Charitable Gift Fund
Francesca Rybar
Erin Salada
Rebecka Salata
Adrianna Salazar
Kenton Sallee
Alan Salmon
Martha Salyers
Cynthia Sampson
Sarah Samuel
Emily Sanchez
David Joe Miller and Robin Sanchez
Ceil and Ray Sanow
Ann Starr Sariego
Jon Sarver
Wade and Mary Margaret Saunders
Caleb Savage
Betsy and James Savely
Brian Saxton
Richard Schaffer
Charlene Scharf
Mark and Courtney Scheiderich
Carla Schell
Bonnie and Elizabeth Schell
Tom Scheve

Andrew Schick
Audrey Schiffman
Sabrena Schilla
Kristi Schleder
Heather and Chris Schlender
Michael Schmahl
Maximillian Schmidt
Carl James Schreck
Maggie Schroder
Alison and David Schuetze
Hedy Fischer and Randy Schull
Pamela Schultz
Tiffany and Rob Schultz
Jodi Schwab
Herschel Schwartz
Philip and Susan Schwarz
Brian Schwegmann
Heather Schwendner
Margaret Schwingel
Connie and Andrew Scotchie
Tabitha Scott
Joan Scully
Robert Seaman
Sheryl Seaman
Carolynn Sears
Natalie and Kent Seber
Dean Segovis
Tomas Seijo
Linda L. Seim
Stacy and Michael Selverne
Jeri Senor
Kristen Sensenig
Miriam Elaine Sexton
Vaden and Elizabeth Shadden
Ellen Shaddock
Anthony Shamray
Rebecca Shareff
The Hon. Roger Sharpe
Allison Sharpe
Carlson Sharpless

Barbara and Robert Shaw Fund

Helen Shay

Evelyn Sheahan

Annette and Ray Sheffield

Anna Shelton-Ormond

Barbara Shepard

Ericka Shepard

Chris Sherbak

Mr. and Mrs. John Sherlock

James Sherman

Cynthia Shilkret

Ishka Shir

Larry Shirley

Marsha and Michael Schlaer

Judy Shook

Megan and Rob Shook

Michael Short

Sarah Shpak

Kristi Shrum

Schrubbe Family Fund

Margaret Teich and Shuchin Shukla

Kelly Siddiqui

Bart Sider

Barbara Siebert

Albert and Judith Siemens

Laurel Siemon

Allison Sigmon

Robert Sigmon

Robert and Marian Sigmon

Susan Sihler

Gmo Silbers

Russell and Jeanine Siler-Jones

Diane Silver

Mr. and Mrs. Charles Silver

Ricky and Traci Silver

Jessica Silverstein

Brooke Simmons

Ward Simmons

Jacquelyn Simms

Mark Simon

Paula Sims

Laura Sinche

Kathleen and Richard Sinclair

Mary Sinclair

Melissa Singh

Hara Sitnick

Melvin Skiles

Dr. and Mrs. Mel Skiles

Ann Marie Skinner

Katy Slack

Andrew Slater

Rogers Slater Foundation

William Slattum

Gergana Slavova

Nancy Sleeper

Jeff Slosman

Barbara Sloss

Ashley Smathers

Colleen Smeekens

Aislinn Smith

Ashlen Smith

Gail and David Smith

Marge Marsh and Earl Thompson

Janice and Charles Smith

Jayne and Legrand Smith

Jerah Smith

Lowell Smith

Melanie Smith

Sorrel Smith

Stephen and Ann Smith

Travis Smith

Brian and Caron Smith

Canie and Lynn Smith

Emelda and Amy Smith

John Smith

Matthew M Smith

Nathan Smith

Phil and Pat Smith

Sarah and Chuck Smither

Crystal Snover

Janet Snyder

Katherine R. Soderquist

Linda Solomon

Tiffany Somers

Sadie and Robert Sondgerath

Jeanne Sophia

Lewis and Mary Anne Sorrells

Mary Soules

Robin Southecorvo

Grant Southwick

Lauren Sowers

Diana Spangler-Crawford

Adrienne Sparks

Jess Spear

Grace Spears

Ernest Speckman

Jane Spence

Adam Sperber

Michelle and Clint Spiegel

Jeremy Spielman

Mark Spigarolo

Jane M Springer-Young

Lee Ann Spivey

Michael and Mary Spivey

Bonnie and Tom Spradling

Charles Davidson and Georganne

Spruce

Kathy St.Clair

Ann Stacey

Courtney Stachowski

Nancy Stainback

Gerard Stamm

Susan Stanfill

Claire Stanhope

Cameron Stanish

Anthony Stanley

Mary Stanley

Kylee Starcher

Karen Stark

Melanie Staron

Harriet Steahly

Sally and Lou Stein

Sophie Steinberg

Barbara Heller and Alan Steinberg

Lauren Steiner

Edith Steinke

John Schlotterbeck and Barbara

Steinson

Abigail Stephens

Teresa Susie Stephens

Rachel Sternberg

Amanda Sterwerf

Cathy and Ed Stevens

Edward Stevens

Dayna Stevenson

Grant Stewart

Jim and Robin Stickney

Phyllis and Richard Stiles

Elizabeth Stilwell

Josh Stithem

Grace and Daniel Stitt

Jessi Stitt

Cecelia Stokes

Lauren Stolte

Becky and Pat Stone

Linda and Eugene Stone

James Storey

Joel L. Storrow

Michael Stout

Jill W. Stowe

Shelby Strahl

Mia Strauss

Lorrie Streifel

Martha Strickland

Carol and Warren Strittmatter

Ellen Stroud

Stubbeman Family Foundation

Donley Studlar

Robyn and Randy Stump

Jan Sturgis

Aparna Sud

Joe Sullivan

Jason Sullivan

Ruth Summers

Katrina Summers

Diane and Paul Summey

Carly Sutton

William Sutton

Stephen Swabek

Sydney Swaim

Lynda Swann

Juanita Swann-Gilbert

Wayne and Jess Swanton

Susan and Roger Swiger

Carol and David Swing

Paul and Tish Szurek

Emily Taff

Michael Tait

Chandan Taleppady

Art Mandler and Sarah Tambor

Sandra Tarlton

Ralph Tarr

Eric and Susan Van Tassel

Jewel Tavener

Judith and Bob Taylor

Linda (Elle) Taylor

Ann Taylor

Mayo Taylor

Michael Tempesta

Al and Sharon Tenty

Fran and Doug Thigpen

Calvin Thomas

Peter Thomasson

Angel Thompson

Eleanor Thompson

John Thompson

Makenzie Thompson

Mary Clair Thompson

Michael Thompson

Nathan Thompson

Larry Thompson

Marge Marsh and Earl Thompson

Shealy Thompson

The Thompson Family Foundation

Megan Tickle

Joan and Mac Tidwell

Mimi Tighe

Patricia Tilburg

Elizabeth H. Tindall

Robert Tinkler

Jeff Tobias

Rozanne Todd

Rhoda Todd

Irmelin Toftegaard

Elizaveta Tokareva

Brian Tombaugh

Deborah Tomlinson

Mattie Tompkins

Pat Tompkins

Maya Tomsons

Sarah Toner

Andrea and Martin Toren

Alissa Torres

Laura Torres

Cheri Torres

Kate Towson

Chloe Trachtenberg

Emry Trantham

Mark and Claire Treanor

Ed Treat

Pamela and Steve Trehub

Dari Tritt

Jan and David Trout

George and Margaret Trowbridge

Roberta Carney and Paula Goldman

Trtee

Joshua Truman

Jack Tarver Foundation Irrevocable

Trust

Edie Tsong

Ruth Tull
Monica Turbyfill
Donald and Steve Turman
Bethany Turner
Richard Turner
Susan Bailey Turner
Winslow Tuttle
Jim and Pam Turner
Erik Tveidt
Maggie Ullman
Anne Urban
Mary van Valkenburg
Sarah Vallelleian
Adriane VanDoren
Alec Vance
Diane and Cattlin Vander-Linden
Betsy Vandermeer
Kirk and Michelle Vandersall
Nicole Vandrovec
Jane and Daniel Vann
Lisa Vann
Brenda Vega
Jessica Venters
Melissa Blue Vereb
Glen Shults and Linda Vespereny
Terry Vess
Jillian Vicario
Kimberly Vickers
Paul and Valorie Vliek
Joe and Beth Vogler
Chris Volz
Linda and Marc Voorhees
Leslie Schmidt Voss Charitable Fund
Guido Voss
John and Carol Vruwink
Laasya Vulimiri
Tony and Jean-Marie VunCannon
Barbara WALLK
Elizabeth Wachacha
Lisa and Brad Waggoner

Chuck and Kristi Wagner
George Wagner
Lauren Wagner
Molly Wagner
Margaret Waldron
Amy Walker
Jackie and Mike Walker
Brent Walker
Rose Wall
James Wallace
Susan and Richard Wallace
Uma Wallis
Edward Walo
Sky Walsh
Arielle Walsh
Tracy Walters
Ronald Walther
Gordon and Wendy Walton
Mike and Pat Wang
Eunice Ward
Jeremy Ward
Jill and Frank Ward
Kurt Ward
Rebecca Ward
Ann S Ward
Carolyn Shorkey and Milton Warden
Natasha Ware
M. E. Warlick
Cecil Warner
Janice and Anthony Warren
Hope Warshaw
Karen Ziff and Richard Wasch
Jaime Wasoka
Thomas P. Waters Foundation
Devin Watkins
Vicki and Larry Watkins
Shannon Watkins
Amy Watson
Phebe Anne and Doug Watson
Tiffany Watson

Henry Watts
Julie Wawro
Howard Waxman
Karen Weaver
Elena Webb
Leonora Biddie Webb
John F. Webb Charitable Account
Nancy Allen and Jack Webb
Mary Weber
Peter and Jana Weed
Patricia Wehby
Michelle Wehner
James and Dana Weikart
Joyce and Robert Weinberg
Robert Weinberg
Katherine and Roger Weinburg
Jamie Weisman
Michael and Della Weizman
Gillian Welch
Tyler Welch
Alice Weldon
Patricia Wellington
Jennifer Wells
Jasmin Welter
Dennis and Jan Wencel
Gerald and Candace Werhan
Ryan Werner-Bille
Robert F Wernet Jr
Nick Wesselman
Brooke West
Jennifer West
Lea West
Emily Westmoreland
Wayne Wetmore
Ann Whaley
Zoe Whaley
Judy Whisnant
Lauren Whisnant
Bob White
Genevieve White

Kathryn White
Angelica Whitehorne
Christina Whiteman
John and Jennifer Whitney
Brenda Lewis and Cathy Whitlock
Andrew Whitton
David Whitty
Gina Wicker
Mackenzie Wicker
Emily Wigglesworth
Aileen Wigglesworth
Lee and Julie Wilcox
Louisa Wilde
Kenneth Wiles
Kristen Wiles
Helen P Wiley
Martha Wiley
Cassy Willemstein
David Williams
Doug & Pat Williams
Douglas and Patricia Williams
Gera Williams
Michelle Williams
Roy M. Davis and Jackie S. Williams
Ryan Williams
Alan Davis and Kathryn Williams
Jessica Williams
Joan Williams
Mary Williamson
Melissa Willingham
Patricia Willis
Keri Willson
Greg and Susanne Walker Wilson
Janie and Larry Wilson
Jenna Wilson
Kristy Wilson
Lesly Wilson
Samuel Wilson
Wendy Lee Wilson
Alice Coblentz and Dudley Wilson

Kern Parker and Betsy Wilson
Martha Wilson
Tracy V Wilson
Angelica Wind
Mary Jane Winfrey
Bill M. Winkler
Pam Winkler
Susan and Robert Winner
Nick Winston
Zoe Winter
Susie Winters
Jackie Wintle
Sondra Wise
C.H. Wisenbaker
Christine Teza and Garth Witcoski
Susan and Tom Withrow
Danni Witsell
Danny Witsell
Amanda Witt
Luna Woden
Ann Marie Woffindin
Kelly and Gerald Wolf
Cheryl Wolfarth
Abbie Wolfe
Debbe and Joe Wombwell
Joe Wombwell
Jade Wonderlich
Khrista Wood
Stewart and Woodhead Giving Account
Edith Woodling
Michelle Wooley
David and Dianne Worley
Anne Wray
Alan Wray
Catherine Wright
David Wright
Sandra Wright
Barbara Wright
Mary Lou Wright
Chandra Wu

Cristi Wunsch
Beaver Wyatt
Steve Wyatt
Abby Yancey
Ariana Yeatts-Lonske
Cami Yehling
Holly Young
Kimberly Young
Harry Young
Joyce and Tom Young
Beth Youngblood
Chris and Courtney Youngblood
Faith Yow
Cliff Yudell
Hailey Yun
Gregory and Marjorie Zack
Olivia Zahler
Sarah Zaki
Liza Zamd
Linda Zang
Dani Zarr
Evelyn Zebro
Paul Zevallos
Mary and John Ziebert
Lisa Zinsmeister
James Van Zoeren
Sherrill and Ted Zoller
Allan Zullo



You are the KEY
to opening
new doors.



HOMeward
BOUND
the key to ending homelessness